



UDIA WA
2020
AWARDS FOR

excellence

NOMINATED PROJECTS
2020

With thanks to our 2020 sponsors

Platinum Sponsor



Gold Sponsors



Category Sponsors



Residential Development

Category Sponsor



2019 Residential Development Winner:
The Amble Estate by York Property Group & Department of Communities

Projects entered in this category would not be expected to include a comprehensive range of facilities within the development but should have established a satisfactory relationship and integration with facilities nearby to meet the needs of residents and users.



PROJECT	COMPANY	
ARIELLA PRIVATE ESTATE	CEDAR WOODS	BRABHAM
THE TOWERS AT ELIZABETH QUAY	COTTEE PARKER/FAR EAST CONSORTIUM	ELIZABETH QUAY
OASIS BALDIVIS	JARDIM PROPERTY	BALDIVIS
ILUMA PRIVATE ESTATE	MIRVAC	BENNETT SPRINGS
LIVING EDGE IN WELLARD	PARCEL PROPERTY/BNI	WELLARD
HERON PARK ESTATE	SATTERLEY	HARRISDALE
THE HALES	SATTERLEY	FORRESTFIELD
CALLEYA	STOCKLAND	TREEBY

Masterplanned Development

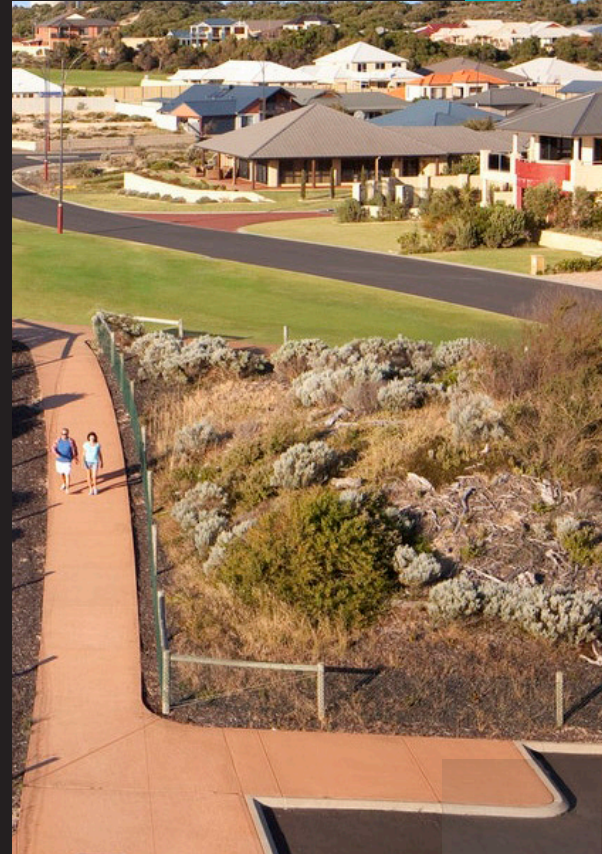
2019 Masterplanned Development Winner:
Dalyellup Beach by Satterley & Department
of Communities

Category Sponsor



**Taylor
Burrell
Barnett**

Projects must have a coherent design with a relevant range of facilities within the development, whether predominately residential, civic, recreational, entertainment, tourist, commercial or industrial, or a combination of any of these primary uses. The size of projects is not defined for entry purposes.



PROJECT	COMPANY	
THE RIVERGUMS	CEDAR WOODS	BALDIVIS
BANKSIA GROVE DEVELOPMENT	LWP GROUP	BANKSIA GROVE
NEWHAVEN	STOCKLAND	PIARA WATERS

Affordable Development

Category Sponsor



Projects will be able to demonstrate an overall outcome based on providing an affordable product. This category is open to entries of any type of residential development including subdivision, medium and high density projects. Entrants should demonstrate both initial affordability of the product as well as the incorporation of 'whole of life' sustainable elements that provide for affordability in ongoing running costs.

2019 Affordable Development Winner:
Nicheliving Willetton by Nicheliving



PROJECT	COMPANY	
SUGARGUM ESTATE	DEPARTMENT OF COMMUNITIES	KIARA
NICHELIVING HAMMOND PARK	NICHELIVING	HAMMOND PARK
WINTERGREEN TWO STOREY'S	STOCKLAND	TREEBY
ARCANA LANE	TERRACE HOMES	SPEARWOOD

High Density Development

Category Sponsor



Projects entered in this category will include apartment buildings with a minimum of four storeys and a minimum R100 site coding and may incorporate minor commercial/retail components.

2019 High Density Development Winner:
Cirque Mount Pleasant by Stirling Capital



PROJECT	COMPANY	
ESSENCE CLAREMONT	BLACKBURNE	CLAREMONT
THE VIC QUARTER	FOWLER GROUP PROPERTIES	VICTORIA PARK
THE TOWERS AT ELIZABETH QUAY	COTTEE PARKER/FAR EAST CONSORTIUM	ELIZABETH QUAY
VANTAGE APARTMENTS	EDGE VISIONARY LIVING	RIVERVALE
SABINA APARTMENTS	FINBAR	APPLECROSS
THE BEACH SHACK	NORUP & WILSON	SCARBOROUGH
THE PRECINCT	NORUP & WILSON	MOUNT PLEASANT

Medium Density Development

2019 Medium Density Development Winner:
Botanical apartments by Edge Visionary Living

Category Sponsor



Projects entered in this category must have a maximum of four storeys and a maximum of R80 site coding. Projects must be predominately residential including small lot housing, villas, town houses, terrace homes, row housing and apartment buildings and may incorporate minor commercial/retail components.



PROJECT	COMPANY	
PALMYRA APARTMENTS ESTATE	FINBAR	PALMYRA
NICHELIVING WILLETTON	NICHELIVING	WILLETTON
EVOLVE DUNCRAIG	PARCEL PROPERTY	DUNCRAIG
26 ON CHARLES	STIRLING CAPITAL	SOUTH PERTH
THE TERRACES AT CALLEYA	STOCKLAND	TREEBY
ARCANA LANE	TERRACE HOMES	SPEARWOOD
MODE	FINI DEVELOPMENTS	BENTLEY
ECHELON	GIORGI	SOUTH PERTH
HENLEY ON PARK	FINI DEVELOPMENTS	COMO

Environmental Excellence

2019 Environmental Excellence Winner:
The Amble Estate by York Property Group & Department of Communities

Category Sponsor



Projects will be able to demonstrate how significant environmental challenges have been overcome and where research, innovation and design or construction techniques have enabled a significant and outstanding response to a need for conservation and environmental improvement.



PROJECT	COMPANY	
BUSHMEAD	CEDAR WOODS	BUSHMEAD
MONTARIO QUARTER	DEVELOPMENTWA	SHENTON PARK
OASIS BALDIVIS	JARDIM PROPERTY	BALDIVIS
THE BEACH SHACK	NORUP & WILSON	SCARBOROUGH
THE PRECINCT	NORUP & WILSON	MOUNT PLEASANT
LIVING EDGE IN WELLARD	PARCEL PROPERTY/BNI	WELLARD
DALYELLUP BEACH	SATTERLEY	DALYELLUP

Urban Renewal

Category Sponsor




**Taylor
Burrell
Barnett**

Projects entered in this category must demonstrate revitalisation and appropriate use of land and/or buildings in established suburbs or inner city areas. No restriction on the type of uses or the inclusion of new elements provided they are integrated with existing built elements. Projects entered in this category can either retain some existing built elements on a site or be inserted into an existing built environment but contain no retained built form themselves.

2019 Urban Renewal Winner:
China Town Revitalisation by Shire of Broome



PROJECT	COMPANY	
PARKSIDE WALK	DEVELOPMENTWA	JOLIMONT
PALMYRA APARTMENTS ESTATE	FINBAR	PALMYRA
SABINA APARTMENTS	FINBAR	APPLECROSS
ROCKINGHAM FORESHORE	PLACE LABORATORY / TABEC	ROCKINGHAM

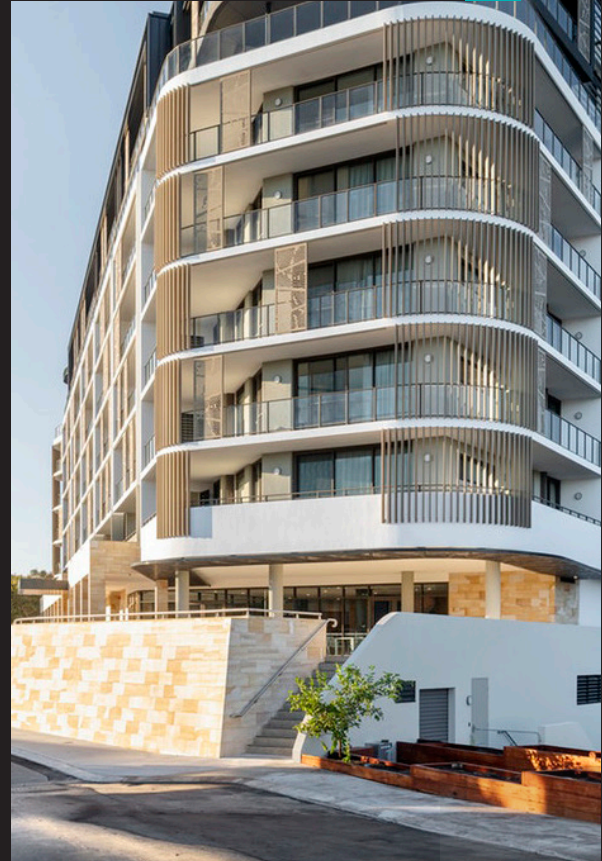
Seniors Living

Category Sponsor



Projects entered into this category must pay particular attention to the needs of residents over 55 years of age and present a high standard of overall design, create a sense of place and have regard for an energy and water efficient lifestyle. Nominations are for residential purposes rather than exclusively for aged care. Accordingly it may include integrated retirement lifestyle housing (independent living units) as well as aged care facilities.

2019 Seniors Living Winner:
Australis at Rossmoyne by Hames Sharley & Adventist Care



PROJECT	COMPANY	
KARINGAL GREEN HEALTH & AGED CARE COMMUNITY	HALL & PRIOR / HASSELL	HIGH WYCOMBE
ASPIRE	STOCKLAND	TREEBY

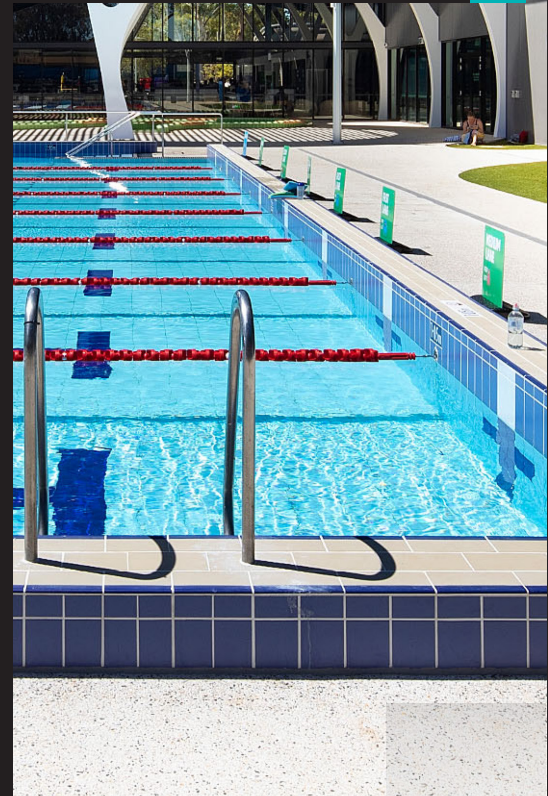
Excellence in Social & Community Infrastructure

Category Sponsor



This Award recognises public (both local and state) or private sector organisations that have demonstrated leadership and innovation in delivering social infrastructure developments, such as civic community buildings, sporting stadiums, schools, hospitals, public open spaces, etc.

2019 Excellence in Social & Community Infrastructure Winner:
Armadale Fitness & Aquatic Centre by City of Armadale



PROJECT	COMPANY	
WAABINY PARK	DEPARTMENT OF COMMUNITIES	BENTLEY
SUBIACO OVAL REDEVELOPMENT	DEVELOPMENTWA	SUBIACO
ILUMA PRIVATE ESTATE	MIRVAC	BENNETT SPRINGS
SHOREHAVEN AT ALKIMOS	PEET	ALKIMOS
EDEN BEACH	SATTERLEY	JINDALEE
AMBERTON BEACH COASTAL PRECINCT	STOCKLAND	EGLINTON

Excellence in Marketing

Category Sponsor



This award recognises excellence in marketing before and/or during the selling stages. Entries are judged on their creative and innovative approach to marketing and branding; understanding of the target market; use of available budget and resources; market acceptance as evidenced by sales; and the achievement of the original marketing objectives.

2019 Excellence in Marketing Joint Winner:
Claremont - Rent to Buy by Mirvac



PROJECT	COMPANY	
HAMPTONS EDGE AT MARINERS COVE	CEDAR WOODS	DUDLEY PARK
THE VIC QUARTER	FOWLER GROUP PROPERTIES	VICTORIA PARK
NICHELIVING WILLETTON	NICHELIVING	WILLETTON
BRIGHTWOOD	PARCEL PROPERTY/BNI	BALDIVIS
GALLERY ESTATE	SATTERLEY	WILLAGEE

UDIA WA would like to extend its thanks to the 2020 Awards for Excellence sponsors

Platinum Sponsor



Gold Sponsors



Category Sponsors



Unit 26, Level 1
3 Wexford Street
Subiaco WA 6008

t 08 9215 3400
f 08 9381 5968
e udia@udiawa.com.au
www.udiawa.com.au

[/UDIAWA](#)
 [/Urban Development Institute of Australia \(WA\)](#)
 [@UDIA WA](#)