



Map of Bush Fire Prone Areas

Murray Carter
Director
Office of Bushfire Risk Management



Why OBRM?

- Reduce loss of life and infrastructure
- Swinging the pendulum (OBRM Charter)
- No silver bullet !
- Managing bushfire risk is a collective of varied approaches and shared responsibility

- Government decision to “split” roles within this initiative
- OBRM utilises mix of voluntary and involuntary policy mechanisms to encourage participation
- Map of Bush Fire Prone Areas one such mechanism

Why “The Map”?

- Consistent and standardised approach
- Approach needs to account for local circumstances
- Triggers further assessment that informs development to a standard

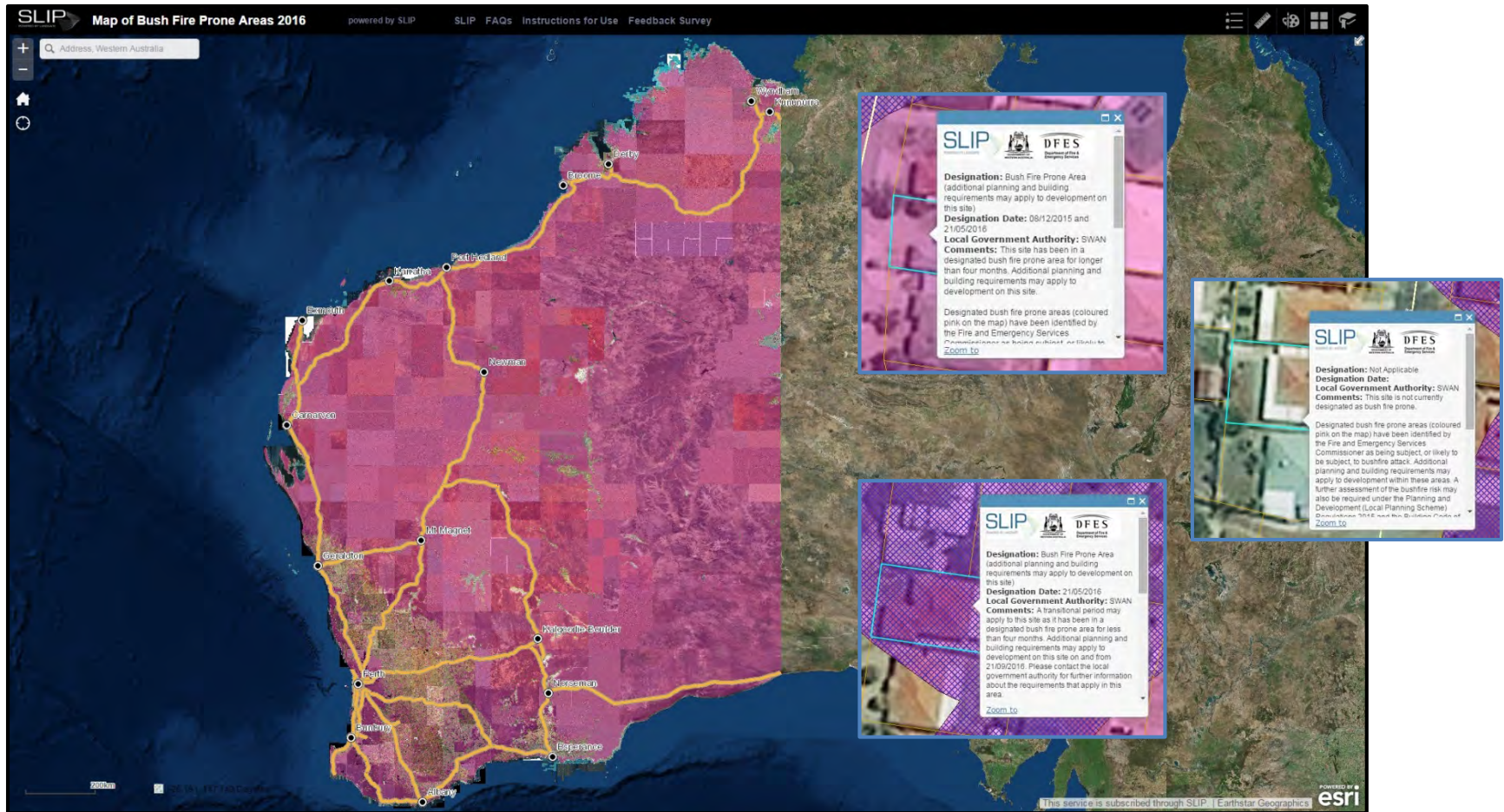
Map updates

- Annual review cycle
- OBRM liaises with each LG to capture local level input against the Mapping Standard
- OBRM and DoP are working on method to integrate BAL contour information
- OBRM will continue to refine standards, guidelines and methods to effectively engage LG's

Challenges

- Big state and limited resources to inform map at local level – necessitates regular update and support from OBRM
- Integration to Esri based platform for Map – necessitates review and improvements
- Bushfires will be a perpetual issue across WA – necessitates reform

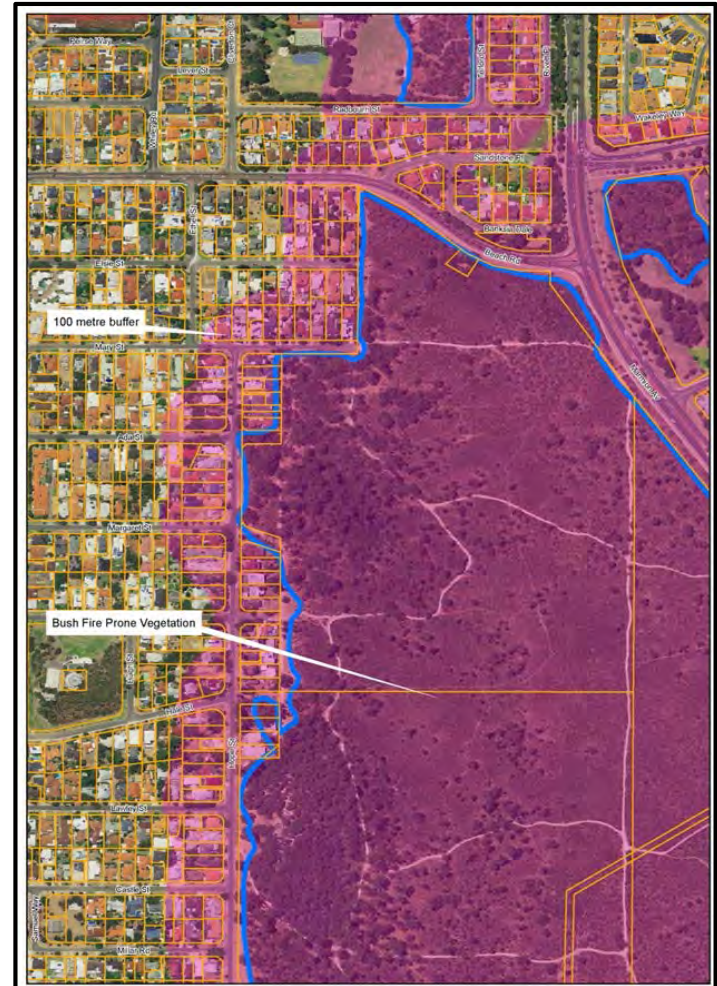
Map of Bush Fire Prone Areas



www.dfes.wa.gov.au/bushfireproneareas

Map of Bush Fire Prone Areas

- Bush fire prone areas are identified by the presence of and proximity to bush fire prone vegetation.
 - 100 metre buffer added to the periphery of this vegetation to create the bush fire prone area.
- Detail in *Mapping Standard for Bush Fire Prone Areas* (visit dfes.wa.gov.au/bushfireproneareas).



Map of Bush Fire Prone Areas

- **Department of Planning**
 - Visit www.planning.wa.gov.au/bushfire or
 - Contact the Bushfire Policy Officer at bushfire@planning.wa.gov.au or on (08) 6551 9000.
- **Department of Commerce – Building Commission**
 - Visit www.commerce.wa.gov.au/building-commission or
 - Contact BCinfo@commerce.wa.gov.au or on 1300 489 099.
- **Office of Bushfire Risk Management**
 - Visit www.dfes.wa.gov.au/bushfireproneareas or
 - Contact OBRM@dfes.wa.gov.au.