
UDIA Forum

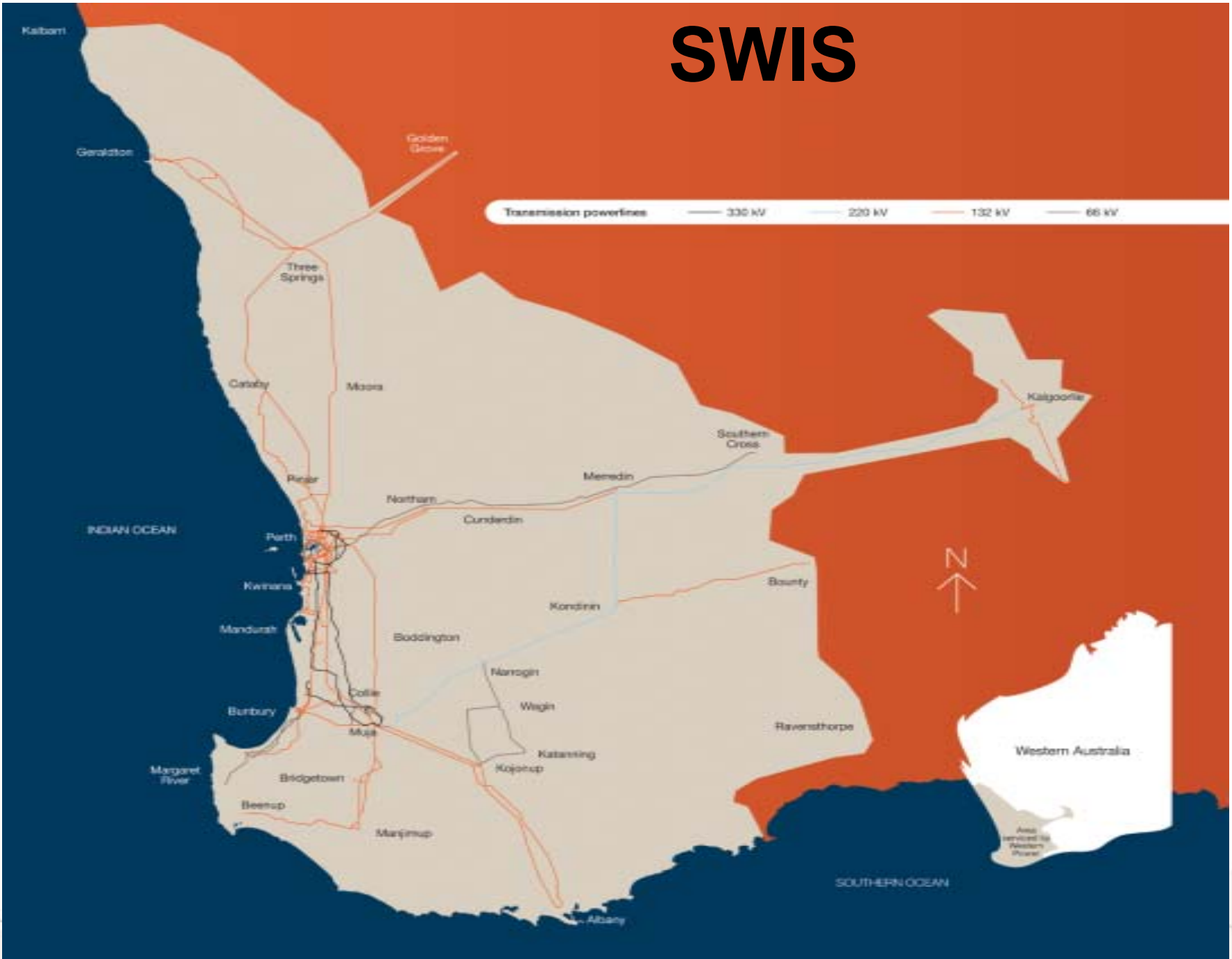
Defining the Urban Front

Laurie Curro

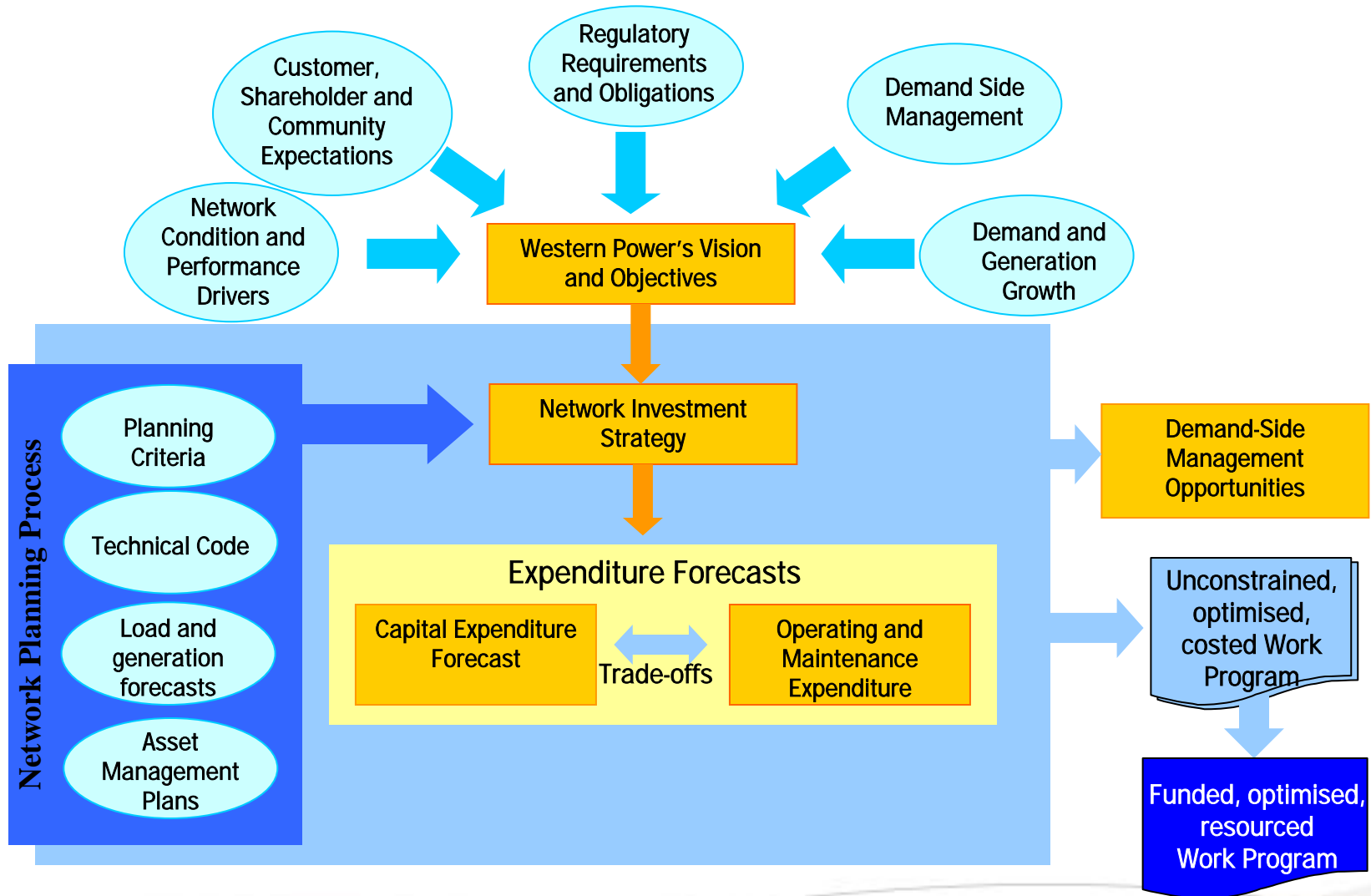
Burswood

29 April 2009

SWIS



Overview of Network Development Process



Our regulatory requirements



Western Power requires ERA approval for each major augmentation proposal before proceeding.

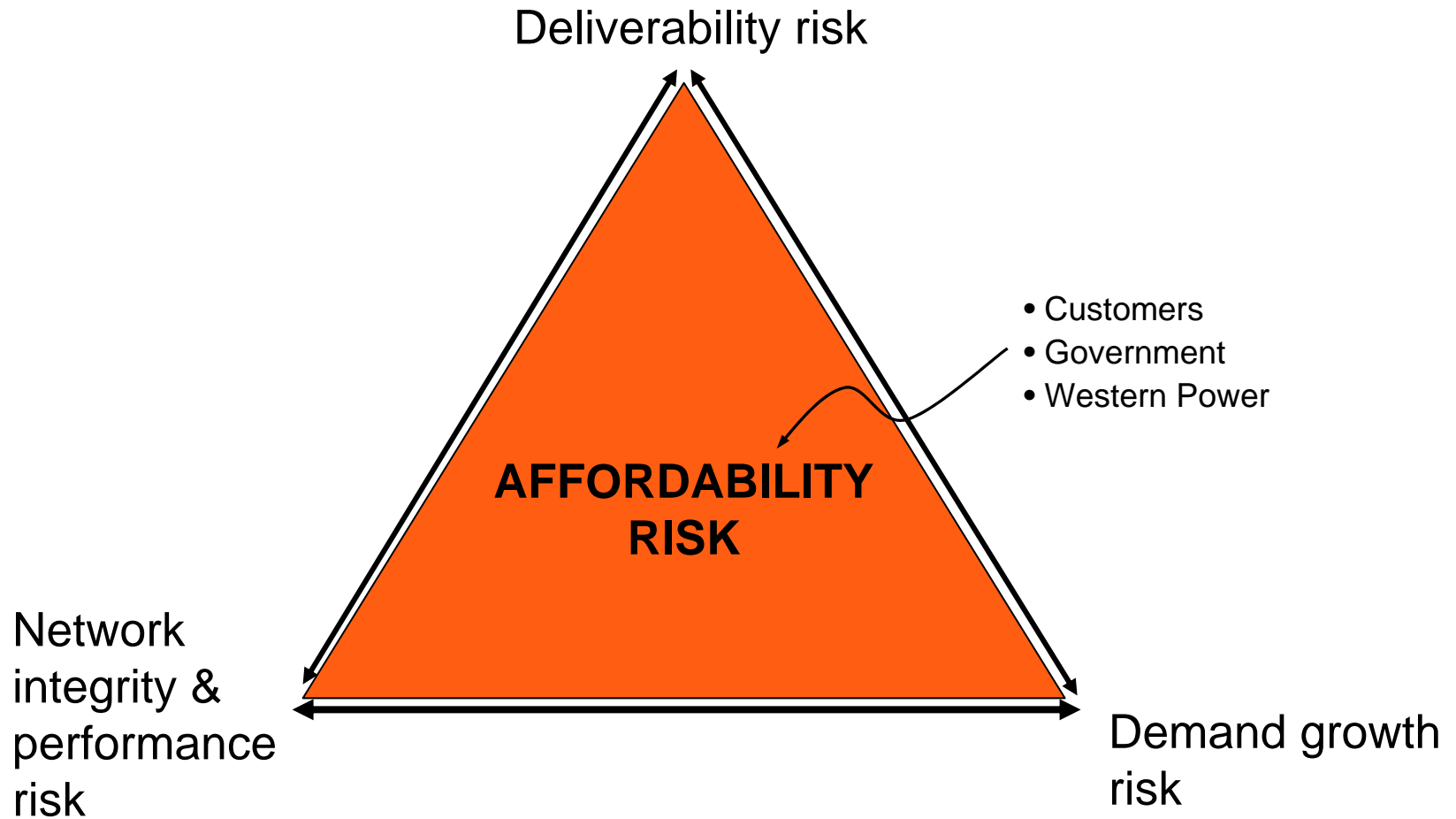
Western Power must demonstrate that new network investment passes the Regulatory Test which stipulates;

- New investments must be prudent (i.e.: prove new facility is needed); and
- Efficient (lowest cost, having regard to economies of scale, practical increment size, etc)

○ **AND** (at least one of the following)

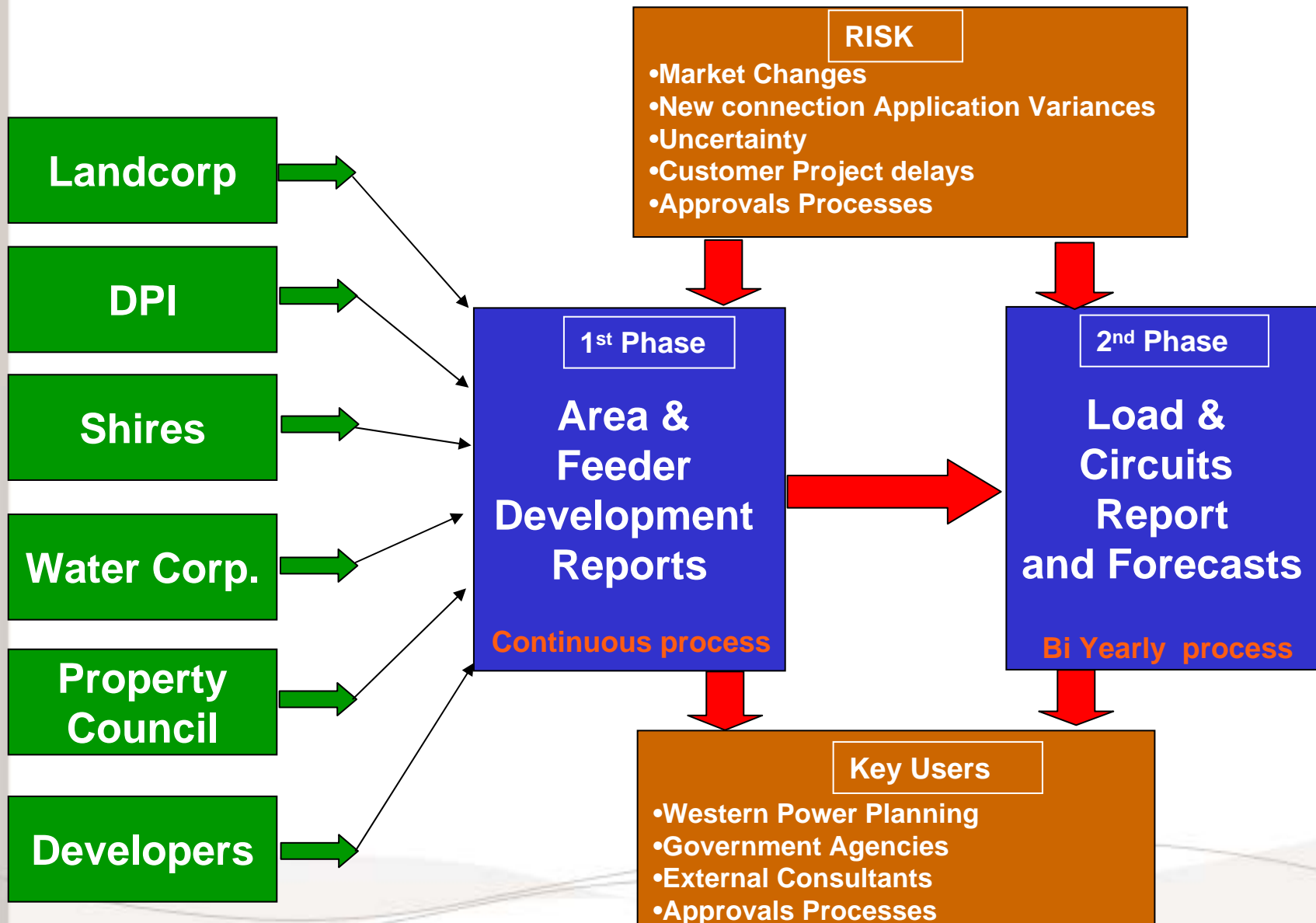
- The cost is recouped via the additional revenue from beneficiaries (tariffs and capital contributions); **or**
- The overall net benefit of the investment justifies a tariff increase to all; **or**
- The investment is needed for safety, reliability or quality of supply reasons.

Western Power needs to balance investment cognisant of multiple risks

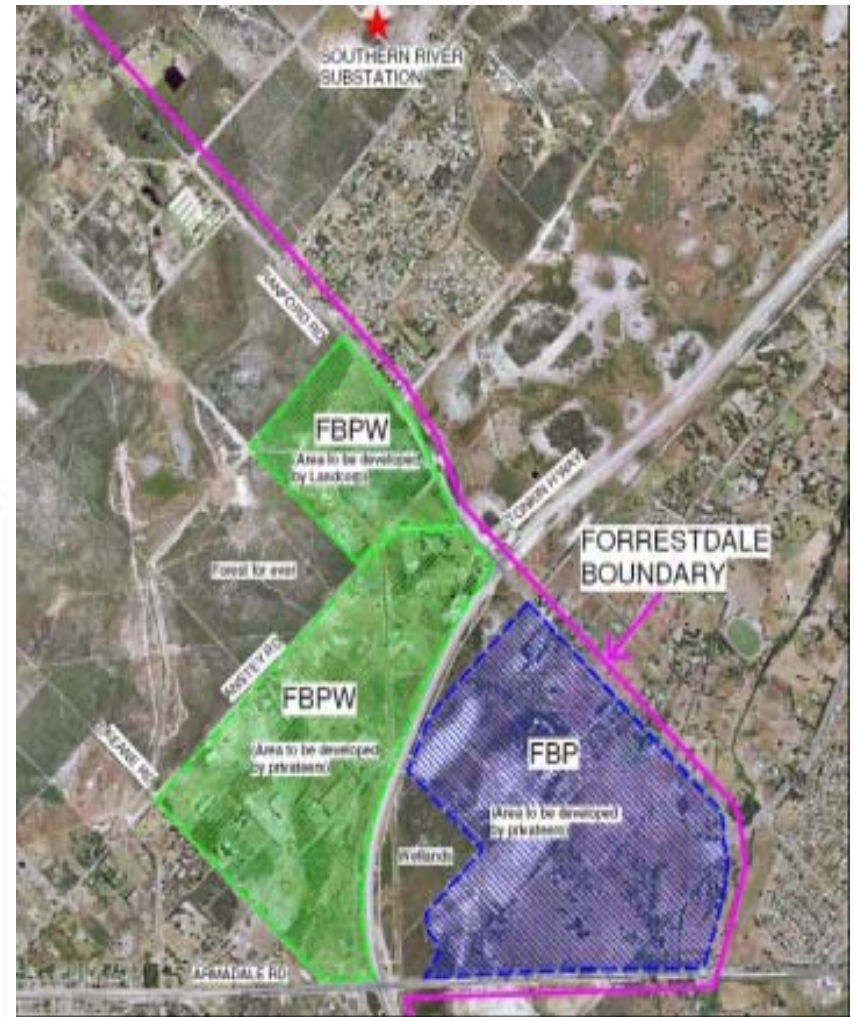
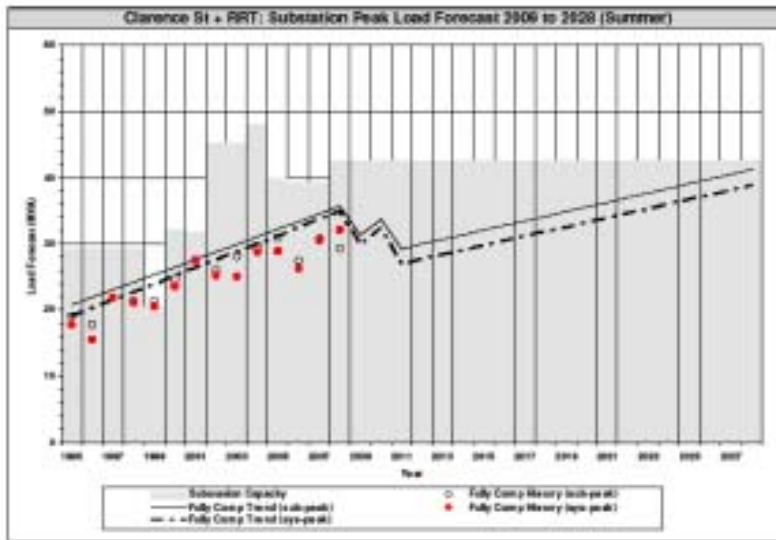
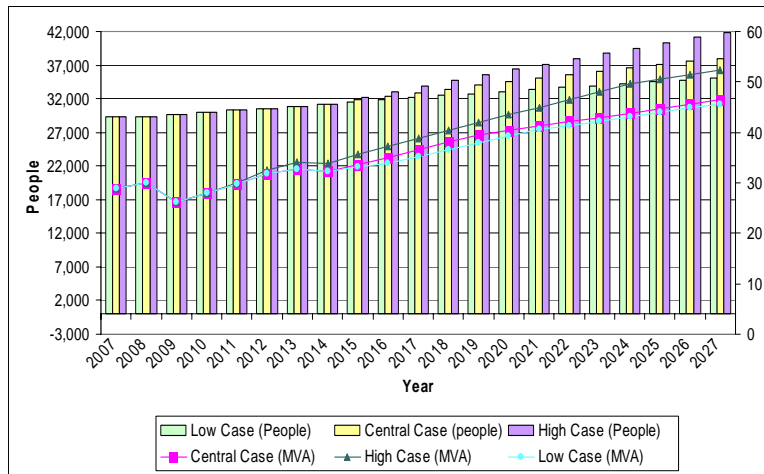


Current Economic Climate provides a level of uncertainty

Load Forecasting Underpins our investment strategy



Forecasting is carried out at many levels



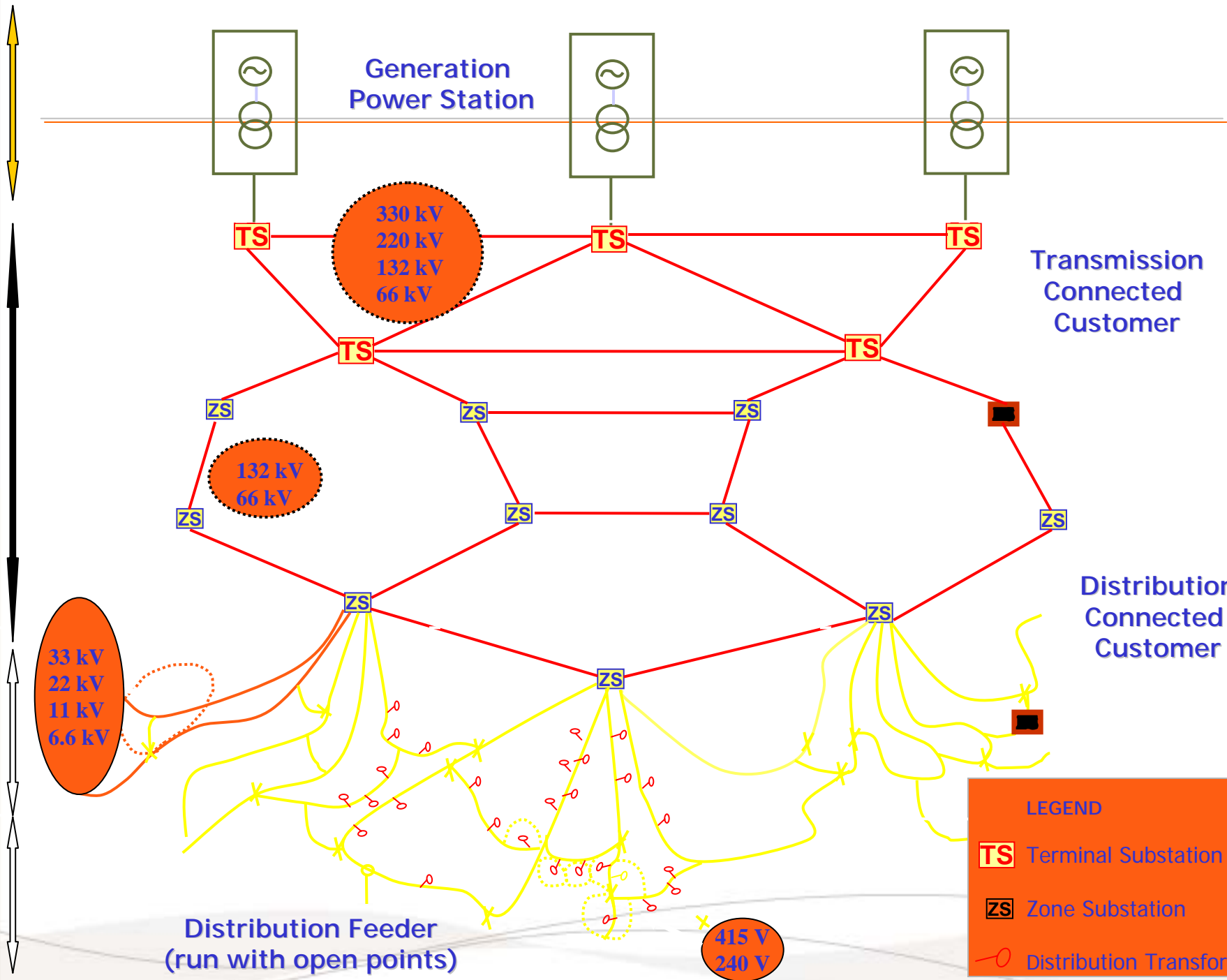
Load Forecasting Underpins WP's investment strategy

Generation

Transmission

HV Distribution

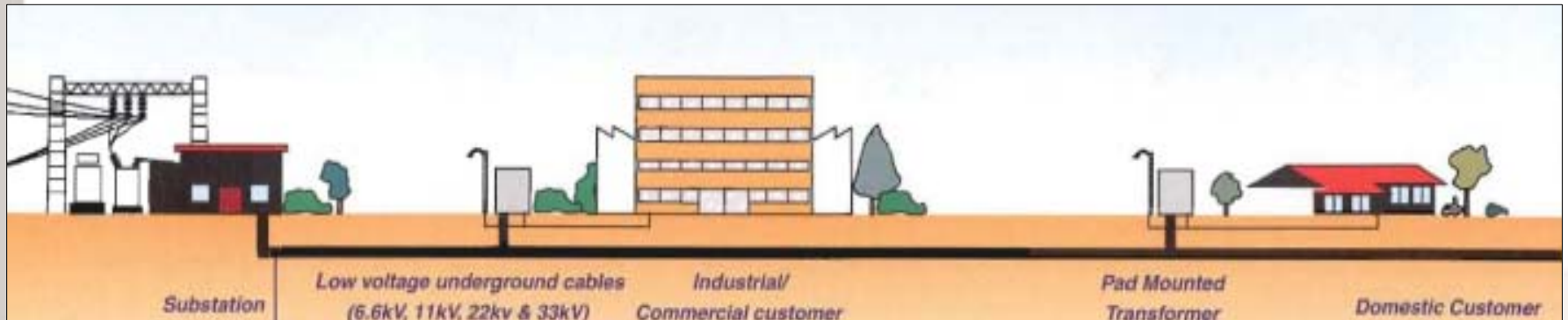
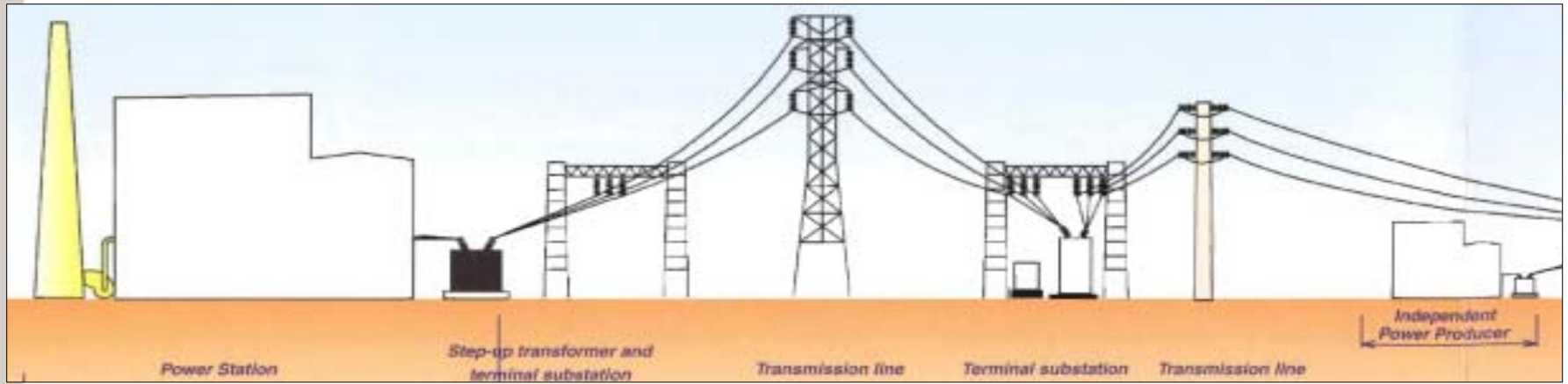
LV Distribution



LEGEND

- TS** Terminal Substation
- ZS** Zone Substation
- Distribution Transformer

Power generation, transmission and distribution



Barriers against infrastructure coordination

- Traditional approaches
- Time frames
 - Work to different horizons
 - Information not available on time
- Too Hard!
 - Won't work!
 - Others don't understand!
 - Past experience
- Funding processes

Opportunity exists to do it better

Infrastructure – “opportunity”



- Coordination of long term planning
 - Government & industry
- Transparency of planning
 - Infrastructure is needed
 - Lowest cost & on time
- Community engagement/involvement
- Key stakeholder engagement
- Multi tiered approach
 - Strategic - approach
 - Tactical – day to day
- Start with a simple easy to administer approach

Opportunity exists to do it better



Thank you for
listening