

Development in Busselton



Presentation to UDIA





Industry

- Changing from a traditional Agriculture based economy
- Accommodation, Cafes Restaurants top employing industry (9.4% of employed)
- Agriculture second (8.9% of employed)
- Construction and Trade Services third top employing industry (8.4% of those employed)



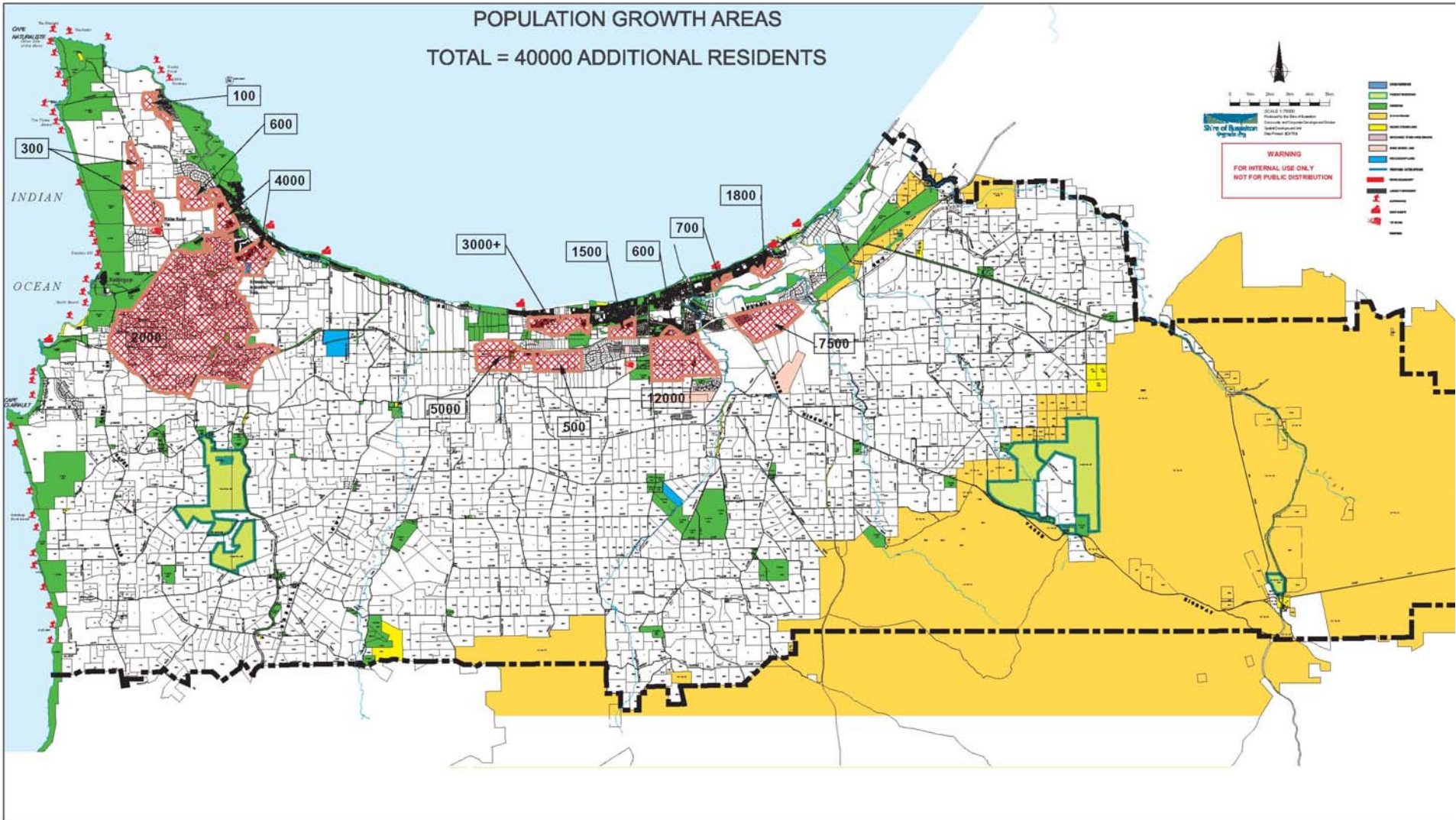
Tourism Industry

- Over 80 wineries in the Shire
- Tourism worth \$200 million annually to local economy
- Shire 600,000 visitors pa (South West 1.6m)
- Highest number of short stay beds in regional WA – approx 11,000 beds
- 45% of private sector investment in tourism developments in the southwest are in the Shire of Busselton

	2005/06	04/06 – 03/07
Scheme Amendments	52	48
Structure Plans/DGP's/ DAPs	22	23
Appeals	10	5
Policy formation	18	33
Development Applications	417	525
Subdivisions	133	148
Clearances	90	94
Other major tasks	10	23
Total	752	899

**56 planning items to Council in
same 12 month period**

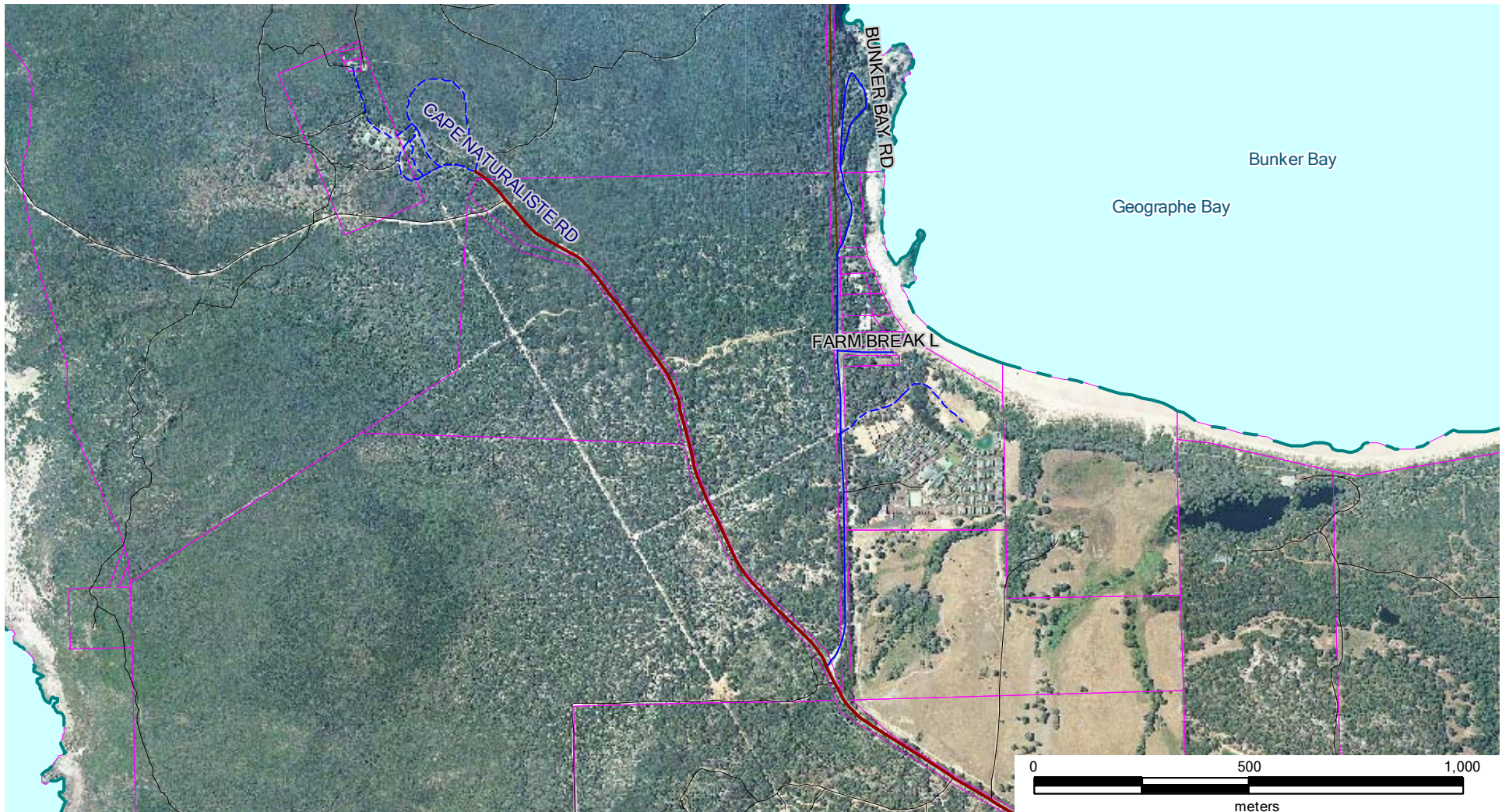
POPULATION GROWTH AREAS
TOTAL = 40000 ADDITIONAL RESIDENTS



Busselton Foreshore Redevelopment



Bunker Bay



Locke Estate



Summary/Questions



Presentation to UDIA

