

MinterEllison



LAWYERS

MinterEllison



LAWYERS

Is Your Development Safe? Urban Planning in Bushfire Prone Areas –

Striking the balance

Presented by Margie Tannock

19 February 2010



FILE NUMBER

MinterEllison | **LAWYERS**

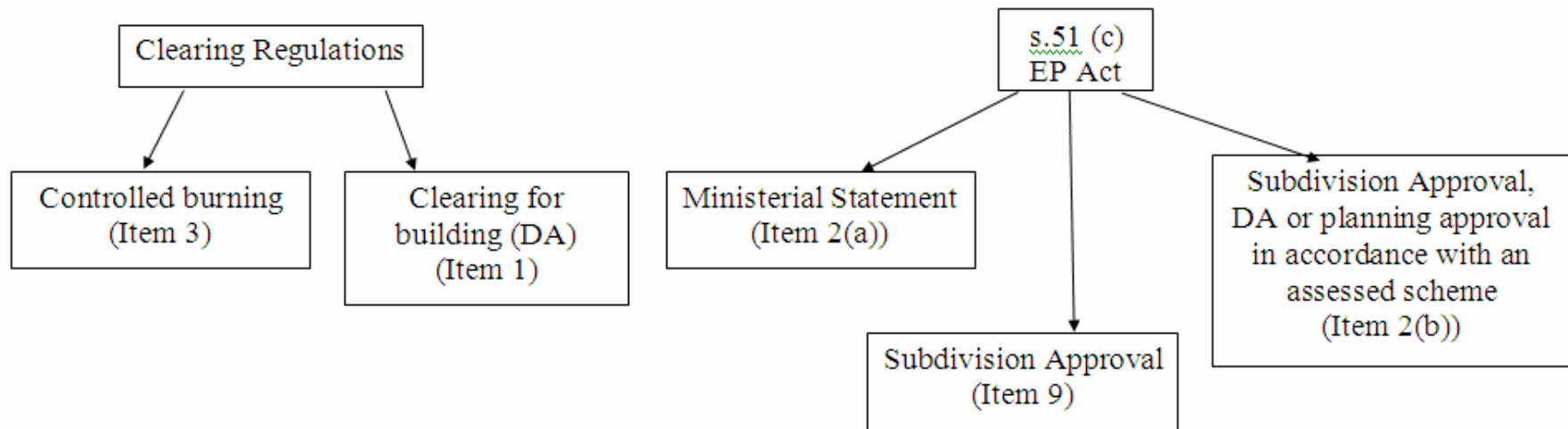
Striking the balance

- Conservation
 - Preservation for environmental value
- Clearing
 - Protection for human life and habitat

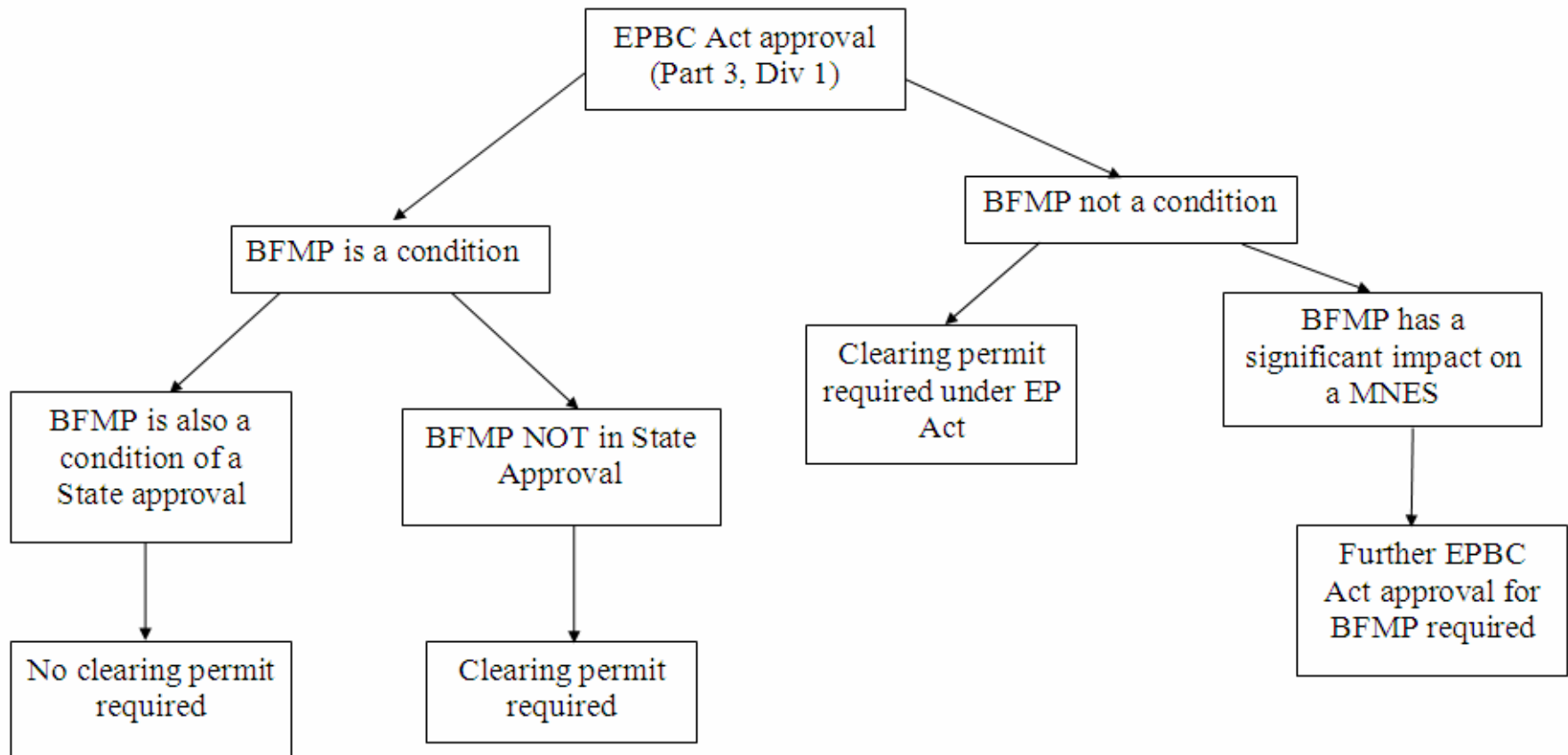
Relevant environmental protection legislation

- *Environmental Protection Act 1986* (WA) (**EP Act**)
- *Environmental Protection (Clearing of Native Vegetation) Regulations 2004* (**Clearing Regulations**)
- *Environmental Protection and Biodiversity Conservation Act 1999* (Cth) (**EPBC Act**)

Clearing exemptions under State Act & Regs



EPBC Act Approval



Peet Alkimos

ATTACHMENT D



PUBLIC OPEN SPACE PROVISION
PEET ALKIMOS LOCAL STRUCTURE PLAN | SECTION 3.1.1.1

22h
PEET

MinterEllison

LAWYERS

Managing liability - insurance

- Must have public liability insurance to cover all claims by third parties
- Be aware of exclusion clauses – they can come into action from a claim of statutory or regulatory breach
- Personal insurance needs to cover bushfire damage

MinterEllison

LAWYERS

MinterEllison

LAWYERS